



# Avermann

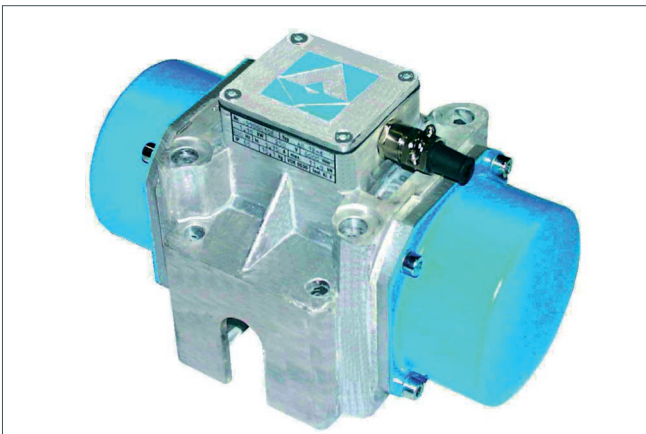
## Vibration equipment



*Inverter control and junction boxes*



*Junction box*



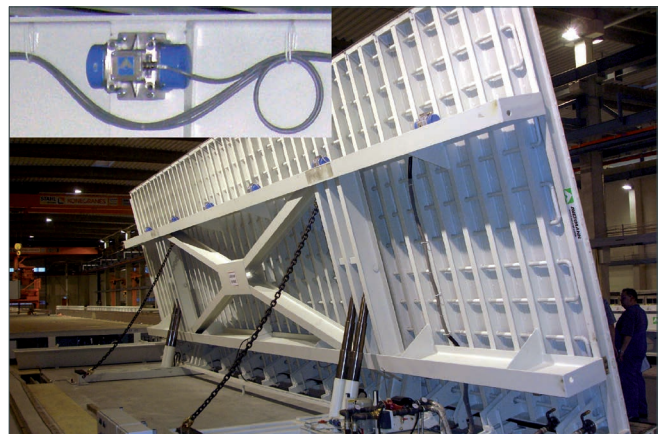
*Vibrator*



*Large panel display for groups and frequency*



*Attached to a formwork*



*Attached to a tilting table*

**Avermann Betonfertigteiletechnik GmbH & Co. KG**

Lengericher Landstr. 35, 49078 Osnabrück, Germany

T +49 5405 505-0 F +49 5405 6441 E [info@avermann.de](mailto:info@avermann.de) | [www.avermann.de](http://www.avermann.de)